

# WAVESHAPER® B-SERIES

**100B Tunable Optical Filter**

**500B Programmable Optical Filter**

**1000B Programmable Optical Filter**

**4000B Programmable Optical Processor**

**32000B / 32002B Reconfigurable Optical Processor**

## Full flexibility for Filtering and Switching operations in optical communications

The WaveShaper B-Series family allows arbitrary optical filtering of attenuation and phase (1000B, 4000B and 3200xB only) across the O-Band, the Super C-Band, Super L-Band or the entire C+L band. The 4000B and the 3200xB allow wavelength selective optical switching and in addition the 1000B and the 4000B provide a high resolution mode of operation in which the optical signal passes twice through the grating based monochromator. This high resolution mode ensures narrow channel shapes in combination with steep filter slopes of more than 700 dB/nm. This instrument family is broadly used in Research, Development and Manufacturing applications.



## FEATURES

- Product versions available for:
  - O-Band
  - Super C-Band
  - Super L-Band
  - C+L Band
- Arbitrary control of attenuation and phase
- Filter update rate of more than 10 Hz
- High resolution: bandwidth down to 8 GHz (FWHM)
- Power splitting (4000B, 3200xB)
- Webserver included

## APPLICATIONS

- DWDM System Test
- Network Simulation
- Transceiver test
- Pulse shaping
- Optical comb generation
- Quantum optics

### Ordering Information:



800 Village Walk #316  
Guilford, CT 06437  
Ph: 203-401-8093

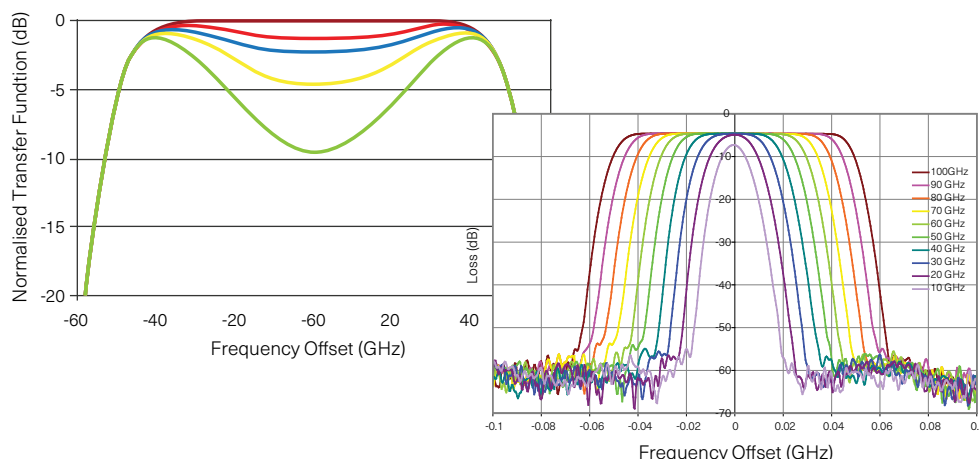
Email orders to: [sales@xsoptix.com](mailto:sales@xsoptix.com)  
Fax orders to: 800-878-7282

# COHERENT

## Applications

### Filtering with arbitrary spectral shapes

Filtering with variable bandwidth and with arbitrary spectral shapes is of importance in system test experiments. For example, the influence of cascading of optical filters on the transmission quality can be investigated by programming the resulting filter shape into the WaveShaper.



### Mux/DeMux and De-/Interleaving

The WaveShaper 4000B can serve as a programmable Multiplexer/Demultiplexer or Interleaver/De-Interleaver. It can incorporate basically any channel spacing, including non-equally spaced channels. It fully supports Flexgrid™, the standard approach to flexible grid network architectures. Since it can operate in both directions, it can be used as a wavelength splitter as well as a combiner.

#### Mux/DeMux

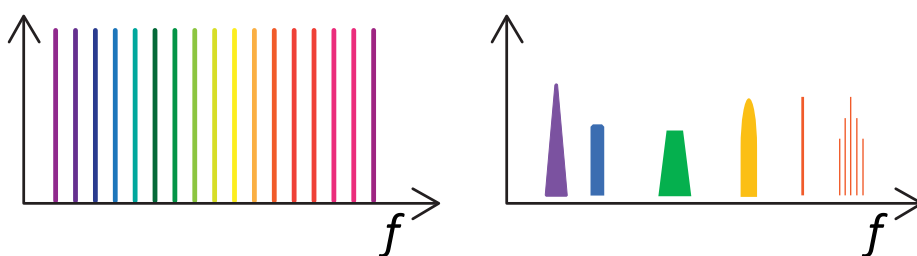


#### De-/Interleaving



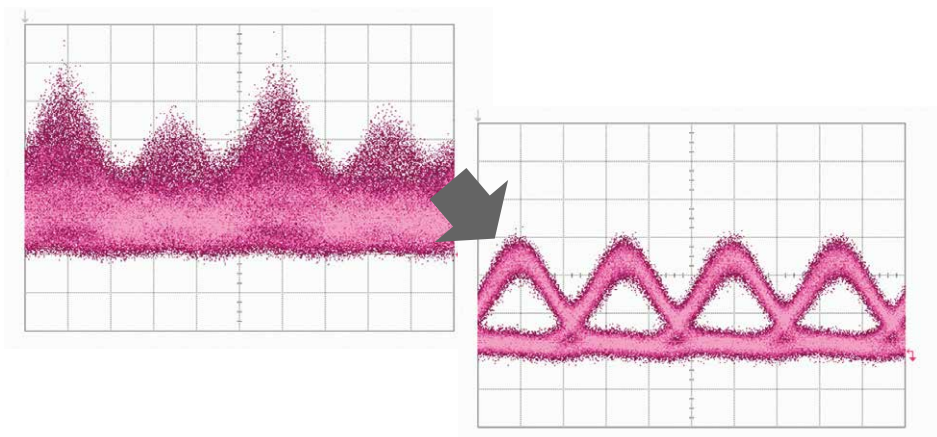
### Component and System Loading

Generation of controllable optical combs is key in a variety of module and system test applications. For example, loading an amplifier with a representative power spectrum is required for proper amplifier testing. Similar requirements exist for testing optical systems involving amplified links. The WaveShaper can create individual spectral lines – even with shapes as if they were modulated.



## Dispersion Compensation

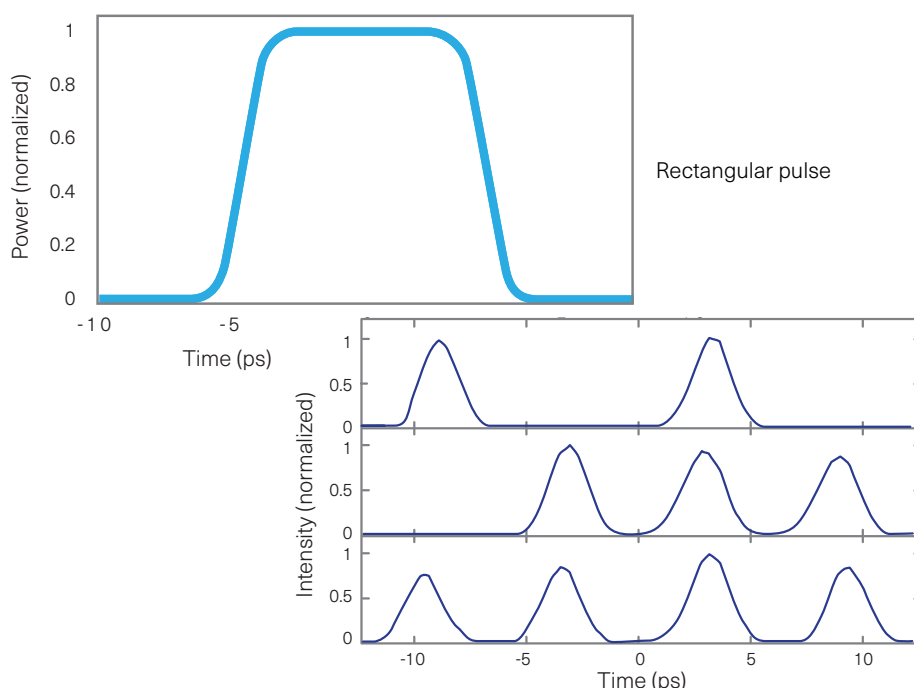
In system testing, verification of dispersion budgets and sensitivity of transmission systems to group delay ripple (and other dispersion imperfections) is of importance. Several members of the WaveShaper family allow setting dispersion values of up to 100 ps/nm (per 50 GHz channel) as well as creating group delay ripple with high spectral frequency.



## Laser Pulse Compression, Shaping and Generation

Pulsed Lasers are utilized in a large number of medical, material processing, communications and other applications. Several of these applications require very short optical pulses, for example when athermal ablation is required. Several members of the WaveShaper family allow dynamic spectral shaping of amplitude and phase of optical pulses and therefore enables stable operation of such laser pulses in the femtosecond regime.

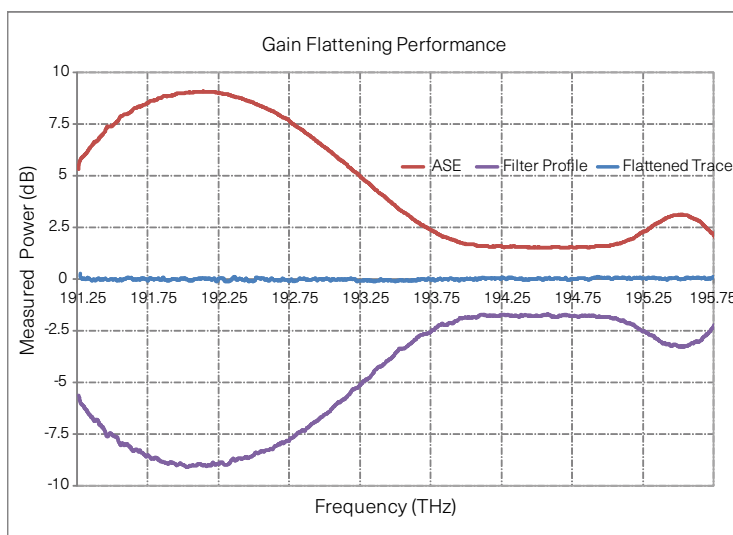
Certain other applications, in particular in the communications area, require specific pulse shapes (like rectangular for example) or particular bit sequences.



Creation of pulse patterns: pulse sequences of 1010, 0111, 1111 have been created from a single input pulse

## Gain Equalization

A number of parameters need to be verified in communication test beds including the tolerance of the transmission system to spectral shapes of the gain. The WaveShaper allows creating such gain shapes with very high resolution (down to 0.01 dB attenuation steps), which allows for creation and compensation of such gain shapes.



## Power Splitting and Broadcasting

The WaveShaper 4000 and 32000 as well as the 32002 have the ability to split an input signal between multiple output ports. Simple structures like wave-length-dependent couplers and splitters (Figure 1) can be created with user defined coupling ratios and frequency dependencies.



Figure 1: Splitter

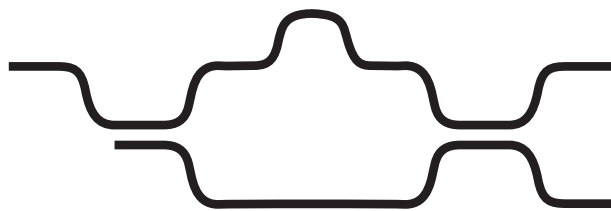


Figure 2: Variable Delay Line Interferometer

## Programmable Interferometer

In addition to splitting power, the phase of signals in the different ports can also be adjusted. This allows the user to create, on the fly, more complex structures like delay line interferometers (e.g. DPSK-Demodulator – shown in Figure 2) or DQPSK-Demodulators with a variable, easily-programmable, optical transfer function (Figure 3).

More complex functions, such as the all-optical Discrete Fourier Transform (DFT) filter shown in Figure 4 can also be easily created.

These capabilities can be best described as “just like an Optical FPGA”, where an optical functional element (component) can be created within a fraction of a second just by uploading a definition table. The ability to easily generate complex interferometric structures simplifies many areas of research which require an arbitrary optical transfer function, including the ability to share (or combine) power between multiple ports.

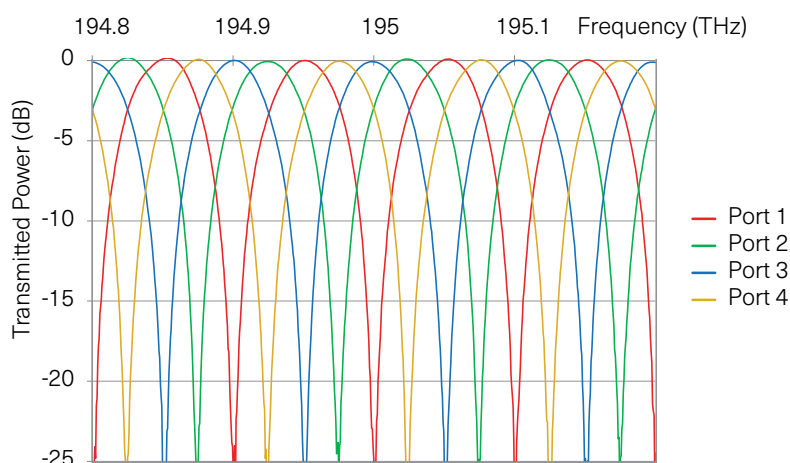


Figure 3: Optical transfer function of a DQPSK demodulator generated in a WaveShaper 4000B using the Fourier processor software

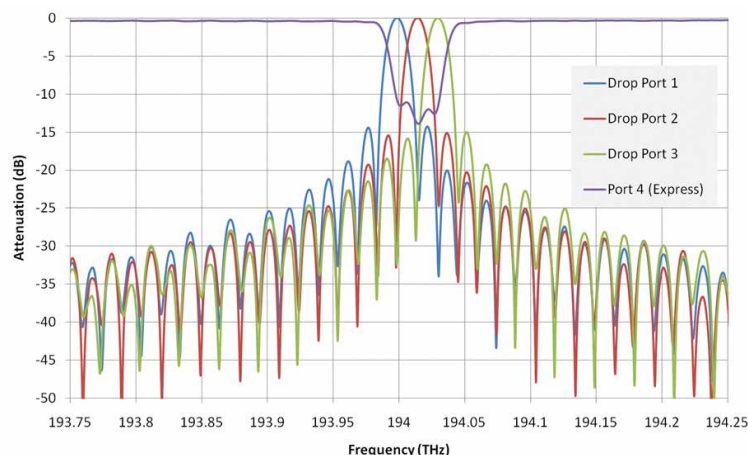
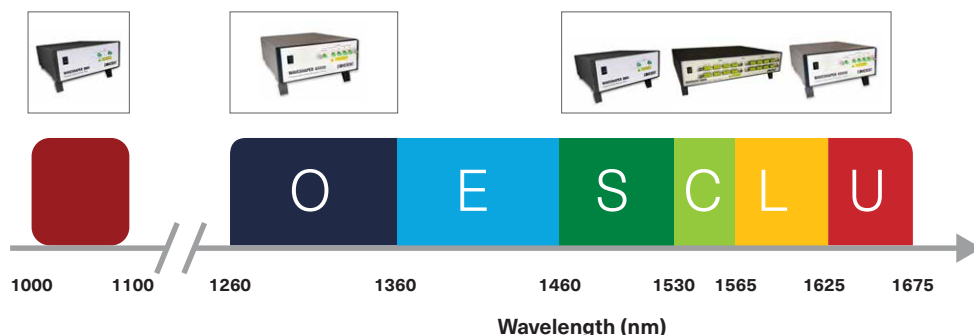


Figure 4: Optical transfer function of an all-optical DFT filter with 15 GHz FSR

A range of WaveShaper models is available covering the wavelength bands of interest in optical communications. In addition to instruments for the C- and the L-band — these bands are already used in many deployed networks — also instruments for the research and development space operating in the O-, S- and U-band are available. In addition a range of instruments developed for laser pulse shaping applications with operational windows in the 1  $\mu\text{m}$ , C- and L-band is available. These are displayed in a separate brochure which is available on <https://www.coherent.com/networking/optical-instrumentation>.

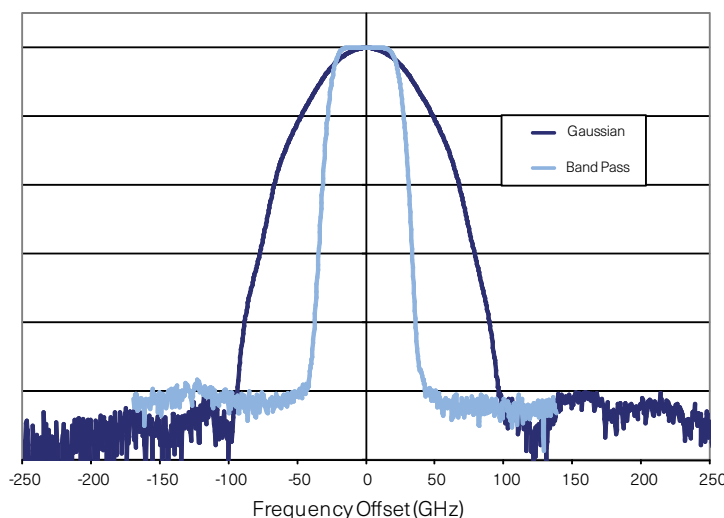
### Wavelength Band Coverage by WaveShaper



## WaveShaper 100B

### Tunable Optical Filter

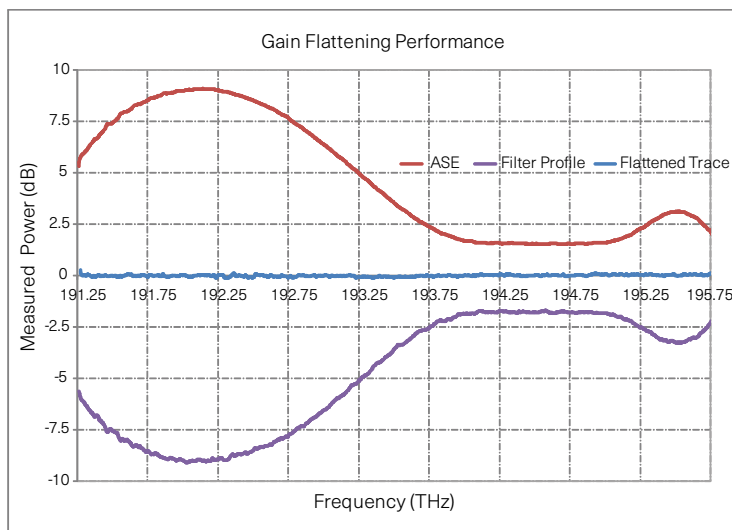
Fully programmable, DWDM tunable optical filter with user-selectable band-pass (flat-top) and Gaussian filter shapes. The filter bandwidth is programmable in 1 GHz increments from 10 GHz up to 1000 GHz, with the center frequency programmable in 1 GHz increments. Ideal for production test applications.



## WaveShaper 500B

### Programmable Optical Filter

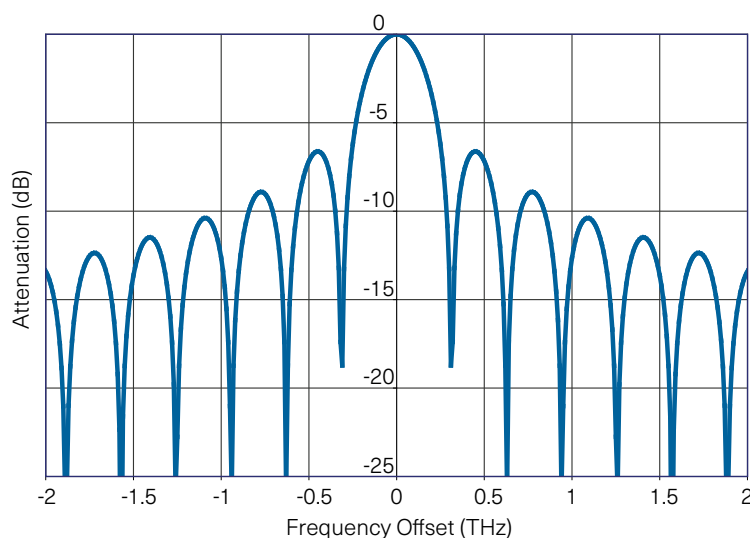
Optical filter with arbitrarily programmable attenuation shape. Typical applications include gain equalization, channel selection and channel shaping as well as noise level setting in a transceiver test application.



## WaveShaper 1000B

### Programmable Optical Filter

Supports arbitrary user-generated channel and filter shapes. Depending on the model of the 1000B, the bandwidth can be set from 10 GHz to about 6 THz with 1 GHz increments (Super-C Band version and Super-L Band version) or from 16 GHz to about 11.1 THz (C+L Band version), also with 1 GHz increments. The required filter shape (both amplitude and phase) can be generated by the user, then loaded into the WaveManager software which translates the user specification into the required optical shape. Band-stop and optical comb filters are also supported as is attenuation control over a range of 40 dB for all filter types.



Example filter shapes generated with WaveShaper 1000/4000 programmable optical processor

## WaveShaper 4000B

### Multiport Optical Processor

Extends the capability of the WaveShaper 1000B including the ability to direct different portions of the signal to different output ports with different, arbitrary user-generated channel shapes for each port.

All members of the WaveShaper 4000 family support power splitting, broadcasting and the ability to create programmable interferometers, as described on page 4.



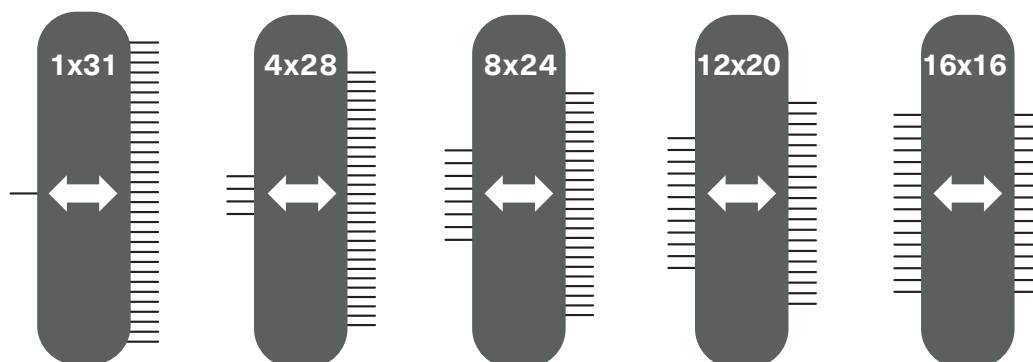
The WaveShaper 1000B and 4000B include a High Resolution mode in which the optical signal is guided twice through the optical filtering engine of the WaveShaper. As a result filter with a minimum bandwidth (FWHM) of 8 GHz and slopes with a steepness of more than 700 dB/nm are available!

## WaveShaper 32000B / 32002B

### Reconfigurable Optical Processor

Programmable wavelength-selective MxN optical filter with control of filter shape and phase on each input/output port combination. The instrument is available as a one-core unit or as a two-core unit, where a core is a WaveShaper engine. The two-core unit therefore includes the functionality of two separate WaveShaper units. Each core has a total number of 32 ports. These can be configured by software commands to 1 x 31, 4 x 28, 8 x 24, 12 x 20 and 16 x 16. All these port combinations work bi-directional, therefore also 31 x 1, 28 x 4, 24 x 8 and 20 x 12 are included.

Covering either the Super-C band or the Super-C + Super-L band, the WaveShaper 32000B and 32002B combine precise control of filter wavelength, bandwidth, shape and phase with the ability to switch and combine multiple signals in an “Add” or “Drop” configuration. Both WaveShaper units, the 32000B and the 32002B, also support power splitting, broadcasting and the ability to create programmable interferometers, as described on page 4.



The WaveShaper 32000B and 32002B allow arbitrary channel control and switching with high granularity. It has been designed for research and development applications in the advanced optical networking space. It provides key functions which are critical in the areas of elastic and space division multiplexed optical networks as well as software defined optical networking and OFDM.

The WaveShaper 32000B and 32002B are programmable with user defined filter shapes either through the WaveShaper App which serves as Graphical User Interface (GUI) or through the Application Programming Interface (API).

Operating the WaveShaper 32000B and 32002B in a 4 x 28, 8 x 24, 12 x 20 or 16 x 16 configuration is in terms of functionality equivalent to cascading two 1 x N WaveShapers back to back. For example, the 12 x 20 configuration is similar to operating a 12 x 1 WaveShaper and a 1 x 20 WaveShaper back to back. In order to prevent wavelength contention, the signals entering the WaveShaper through the different input ports should not spectrally overlap (one specific wavelength is only used at one input port - other ports receive different wavelengths). Both the GUI and API ensure that only those filter functions are accepted which do not lead to wavelength contention issues.

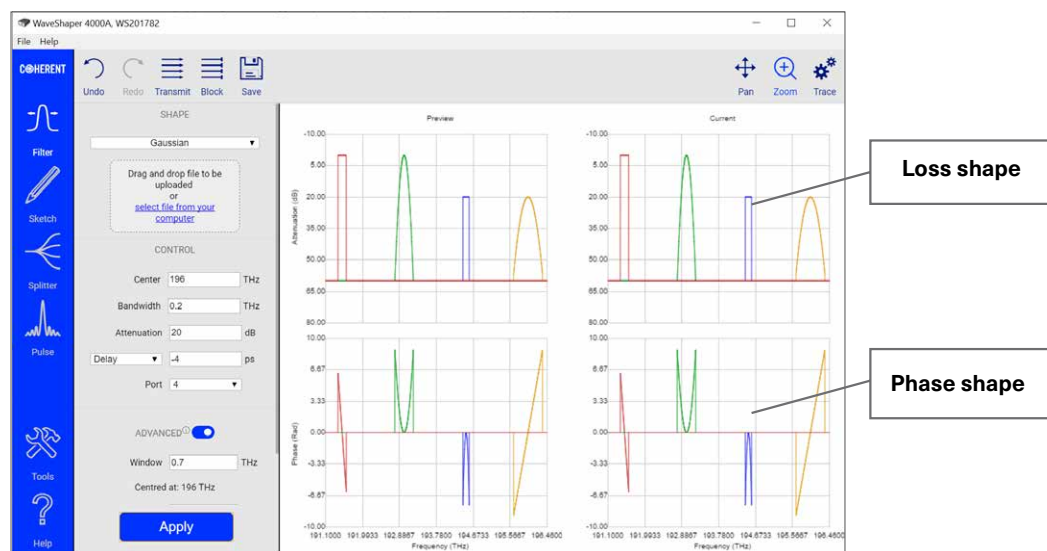
The programmable and integrated optical functions of the WaveShaper 32000B and 32002B are highly desirable in next generation optical data center interconnects and high performance computing.

## Graphical User Interface (GUI)

The WaveShaper B Series instruments are controlled from an external device to select and update the filter shape. Communication with the WaveShaper is via USB or Ethernet interfaces. For the Graphical User Interface (GUI), the B Series WaveShaper supports the following approaches:

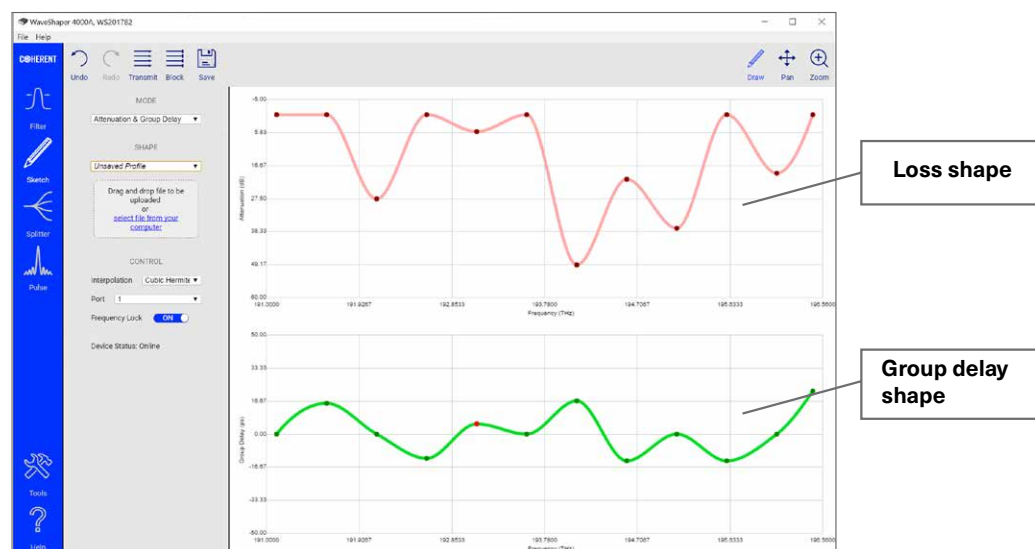
- **Integrated Webserver:** The WaveShaper Series B instruments contain an in-built webserver that provides the most flexible approach, as the users client only needs to provide a web browser. No dedicated software or drivers are required. Supported systems include Windows 7 and higher, Linux, OS X, Android, iOS etc. Existing \*.wsp and \*.ucf files can be used, providing backward compatibility with current filter profiles.

- **WaveShaper App software package:** This package runs on the user's computer and is available for Win 10 and 11 systems. It provides the same functionset as operation through the web browser, as well as providing a full device discovery service for networked units. The WaveShaper App package can be downloaded from <https://www.coherent.com/networking/optical-instrumentation>.



## WaveSketch

WaveSketch is an exciting capability which enables users of all versions of the WaveShaper 500B, 1000B, 4000B and 32000B / 32002B to manually create filter shapes using a 'drag and drop' graphical interface. As both the loss and phase (only for 1000B, 4000B and 32000B / 32002B) of the filter curve are manipulated on screen, the WaveShaper transfer function is updated in real time thus allowing, for example, continuous adjustments to eliminate drift in system test applications. The figure below shows a WaveSketch screenshot in which defined points can be added, deleted or modified as required.

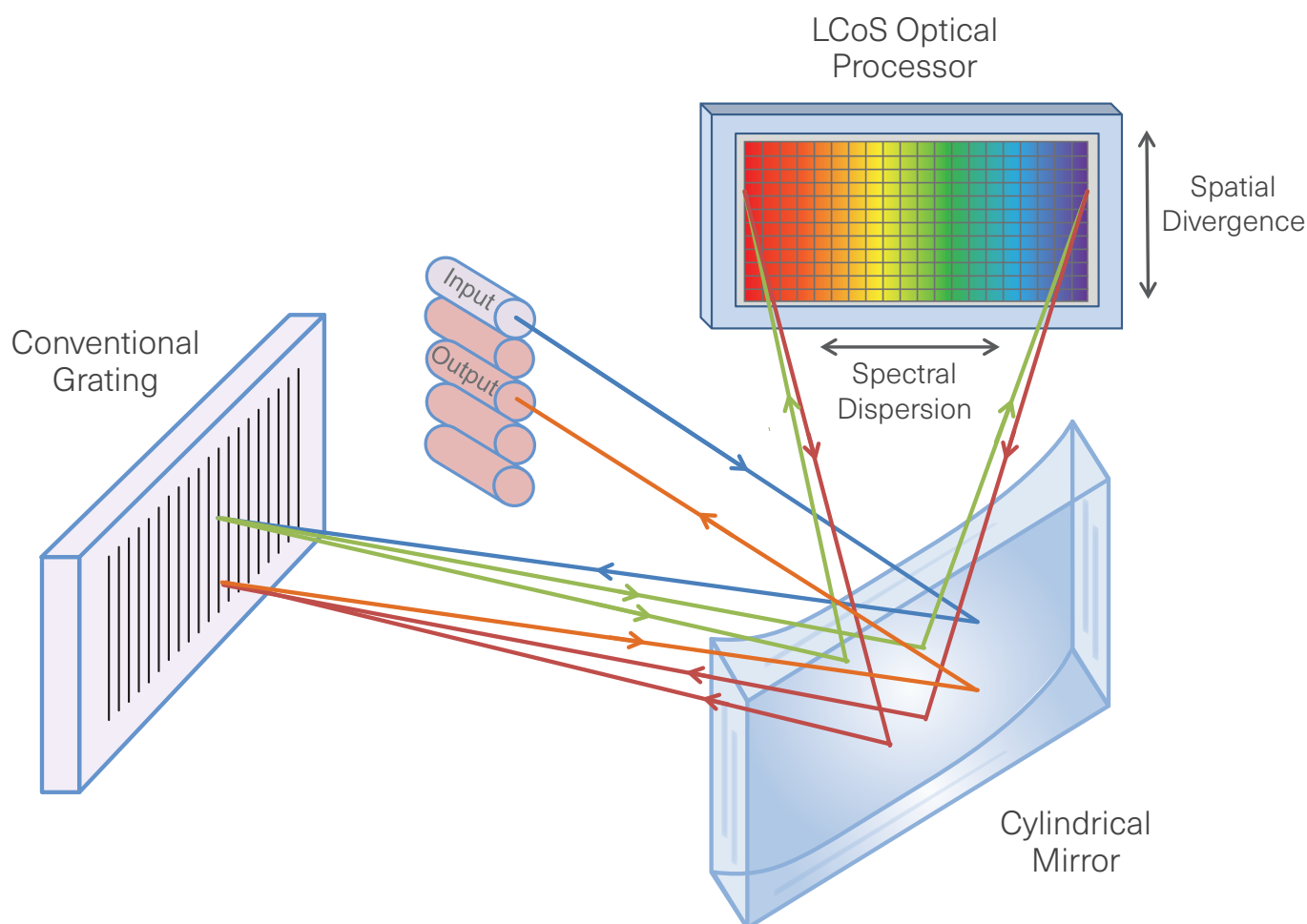


## Application Programming Interface (API)

The WaveShaper B Series instruments include a web service API which enables the user to remotely configure the device over an Ethernet connection using HTTP commands from any software programming language. Programming examples are available for LabView, Matlab, Python, Octave, Visual Basic and C#.

## Technology - How does it work?

The WaveShaper family is based on advanced Liquid Crystal on Silicon (LCoS) technology. As shown schematically in the figure below, the input signal is dispersed by a conventional grating before its spectral components hit the LCoS optical processor. This LCoS processor consists of a matrix of reflective liquid crystal elements. By applying voltages to these matrix elements, they can add individual phase shifts to the reflected signals which allows beam steering of the signal components hitting the LCoS processor. As the wavelengths are separated on the LCoS chip, the control of each wavelength is independent of all others and can be switched or filtered without interfering with other wavelengths. As a result, the structure offers spectral attenuation, dispersion and optical switching capabilities which are available in the WaveShaper family.



**Specifications** The device will meet all specifications following a warm-up period of 10 minutes from a temperature within the Operating Temperature range. Specifications may change without notice.

Model		100B/C	500B/C	1000B/C	100B/XL	500B/XL	1000B/XL	500B/SuperL	1000B/SuperL	500B/X	1000B/X
Optical Cores		Single									
Transmission Band		Super-C			Extended-L			Super-L		Super-C+Super-L	Super-C+ Ext-L
Optical Port Configurations		1x1									
Filter Control	Operating Frequency Range	190.55 THz to 196.775 THz (1523.53 nm to 1573.301 nm)			185.000 THz to 191.250 THz (1567.542 nm to 1620.50 nm)			184.25 THz to 190.59 THz (1572.97 nm to 1627.10 nm)		184.28 THz to 196.8 THz (1523.4 nm to 1626.8 nm)	185.85 THz to 197.00 THz (1521.79 nm to 1613.08 nm)
	Filter Bandwidth (7)	10 GHz to 1 THz	10 GHz to full range	10 GHz to full range 8 GHz to full range (1)	10 GHz to 1 THz	10 GHz to full range	10 GHz to full range 8 GHz to full range (1)	10 GHz to full range	10 GHz to full range 8 GHz to full range (1)	12 GHz to full range	18 GHz to full range 14 GHz to full range (1)
	Filter Shape	Band-pass, Gaussian	Arbitrary Attenuation	Arbitrary Attenuation and Arbitrary Phase	Band-pass, Gaussian	Arbitrary Attenuation	Arbitrary Attenuation and Arbitrary Phase	Arbitrary Attenuation	Arbitrary Attenuation and Arbitrary Phase	Arbitrary Attenuation	Arbitrary Attenuation and Arbitrary Phase
	Frequency Setting Resolution	0.1 GHz (0.8 pm)									
	Frequency Setting Accuracy	±1.5 GHz (±12 pm)								±5 GHz (±40 pm)	
	Bandwidth Setting Resolution	0.1 GHz (0.8 pm)									
	Bandwidth Setting Accuracy	±5 GHz (±40 pm)								±10 GHz (±80 pm)	
	Bandwidth Setting Repeatability	±2.5 GHz (±20 pm)								±5 GHz (± 30 pm)	
	Group Delay Control Range	Not Applicable		±25 ps	Not Applicable		±25 ps	Not Applicable	±25 ps	Not Applicable	±15 ps
	Attenuation Control Range	Not Applicable	0 to 40 dB		Not Applicable	0 to 40 dB					
	Attenuation Setting Resolution	Not Applicable	0.01 dB		Not Applicable	0.01 dB					
	Attenuation Setting Accuracy	Not Applicable	±1 dB for 0.01 to 10 dB ±10% for 10.01 to 25 dB ±15% for 25.01 to 30 dB		Not Applicable	±1 dB for 0.01 to 10 dB    ±10% for 10.01 to 25 dB    ±15% for 25.01 to 30 dB					
Settling Time (Filter update rate)	<0.1 s (>10 Hz)										
Loss and Dispersion	Insertion Loss	5 dB (2)		5 dB (2) 10 dB (1,2)	5 dB (2)		5 dB (2) 10 dB (1,2)	5 dB (2)	5 dB (2) 10 dB (1,2)	5 dB (2)	5 dB (2) 10 dB (1,2)
	Insertion Loss Non-Uniformity	0.6 dB									
	Polarization Dependent Loss (PDL)	0.4 dB									
	Differential Group Delay (DGD)	0.6 ps									
	Return Loss	25 dB									
Optical Power (4)	Max Total Input Optical Power	27 dBm									
	Max Optical Power per 50 GHz channel	13 dBm									
Environment	Operating Temperature	10 to 35 °C									
	Operating Humidity	10% to 90% non condensing									
Electrical	Communications Interface	USB 2.0, Ethernet (GbE)									
	Power Consumption	< 50 W									
Mechanical	Connector Interface	FC/APC, FC/UPC									
	Dimensions	241 x 88 x 316 mm³									
	Weight	3.8 kg									

Notes: (1) Valid for port 1 when selecting “High Resolution” mode

(2) Valid for Filter Bandwidth settings of 15 GHz and larger. For Filter Bandwidth settings below 15 GHz an additional loss of up to 2 dB may apply.

(3) Valid for Filter Bandwidth settings of 25 GHz and larger. For Filter Bandwidth settings below 25 GHz an additional loss of up to 2 dB may apply.

(4) Optical signals with spectral components below 600 nm must be avoided.

(5) Specifications for the WaveShaper 1000B/O, 4000B/O, 32000B and for 32002B are preliminary.

(6) The WaveShaper 32000B and 32002B have at least 8 premium ports per core which show reduced insertion loss. These will be named in the Certificate of Conformity which comes along with the shipment.

(7) Bandwidth is defined as Full Width at Half Maximum (FWHM)

**Specifications** The device will meet all specifications following a warm-up period of 10 minutes from a temperature within the Operating Temperature range. Specifications may change without notice.

Model		1000B/O	4000B/O	4000B/C	32000B/C	32002B/C	4000B/XL	4000B/SuperL	4000B/X	32000B/X	32002B/X			
Optical Cores		Single					Dual		Single				Dual	
Transmission Band		O-Band		Super-C			Extended-L		Super-L		Super-C + Ext-L		Super-C + Super-L	
Optical Port Configurations		1x1	1x4		1x31, 4x28, 8x24, 12x20, 16x16		1x4				1x31, 4x28, 8x24, 12x20, 16x16			
Filter Control	Operating Frequency Range	220.76 THz to 237.20 THz (1264 nm to 1358 nm)		190.55 THz to 196.775 THz (1523.53 nm to 1573.301 nm)			185.000 THz to 191.250 THz (1567.542 nm to 1620.50 nm)		184.25 THz to 190.59 THz (1572.97 nm to 1627.10 nm)		185.85 THz to 197.00 THz (1521.79 nm to 1613.08 nm)		184.28 THz to 196.8 THz (1523.4 nm to 1626.8 nm)	
	Filter Bandwidth (7)	30 GHz to full range		10 GHz to full range 8 GHz to full range (1)	10 GHz to full range		10 GHz to full range 8 GHz to full range (1)	10 GHz to full range 8 GHz to full range (1)	10 GHz to full range 8 GHz to full range (1)	18 GHz to full range 14 GHz to full range (1)	12 GHz to full range			
	Filter Shape	Arbitrary Attenuation and Arbitrary Phase												
	Frequency Setting Resolution	0.1 GHz (0.8 pm)												
	Frequency Setting Accuracy	±10 GHz (± 60 pm)		±1.5 GHz (±12 pm)						±5 GHz (±40 pm)				
	Bandwidth Setting Resolution	0.1 GHz (0.8 pm)												
	Bandwidth Setting Accuracy	±20 GHz		±5 GHz (±40 pm)	±10 GHz (±80 pm)		±5 GHz (±40 pm)			±10 GHz (±80 pm)				
	Bandwidth Setting Repeatability	±5 GHz (± 30 pm)		±2.5 GHz (±20 pm)		±5 GHz (± 30 pm)		±2.5 GHz (±20 pm)			±5 GHz (± 30 pm)			
	Group Delay Control Range	±20 ps		±25 ps		±15 ps		±25 ps			±15 ps			
	Attenuation Control Range	0 to 40 dB												
	Attenuation Setting Resolution	0.1 dB			0.01 dB									
	Attenuation Setting Accuracy	±1 dB for 0.01 to 10 dB					±10% for 10.01 to 25 dB		±15% for 25.01 to 30 dB					
	Settling Time (Filter update rate)	<0.1 s (>10 Hz)												
Loss and Dispersion	Insertion Loss	8 dB		5 dB (2) 10 dB (1,2)	6.0 dB (premium ports) (6) 8.0 dB (standard ports)		5 dB (2) 10 dB (1,2)		6.5 dB (3) 12 dB (1, 3)	6.5 dB (premium ports) (6) 9.0 dB (standard ports)				
	Insertion Loss Non-Uniformity	0.8 dB		0.6 dB		1.5 dB		0.6 dB		0.8 dB	1.5 dB			
	Polarization Dependent Loss (PDL)	0.6 dB		0.4 dB		0.8 dB		0.4 dB		0.6 dB	0.8 dB			
	Differential Group Delay (DGD)	0.5 ps		0.6 ps		0.5 ps		0.6 ps		0.5 ps				
	Return Loss	30 dB		25 dB		30 dB		25 dB		30 dB				
Optical Power (4)	Max Total Input Optical Power	27 dBm												
	Max Optical Power per 50 GHz channel	13 dBm												
Environment	Operating Temperature	10 to 35 °C												
	Operating Humidity	10% to 90% non condensing												
Electrical	Communications Interface	USB 2.0, Ethernet (GbE)												
	Power Consumption	< 50 W			< 60 W		< 50 W			< 60 W				
Mechanical	Connector Interface	FC/APC, FC/UPC			LC/APC		FC/APC, FC/UPC			LC/APC				
	Dimensions	241 x 88 x 316 mm (3)			241 x 88 x 375.5 mm (3)	482 x 88 x 375.5 mm (3)	241 x 88 x 316 mm (3)			241 x 88 x 375.5 mm (3)		482 x 88 x 375.5 mm (3)		
	Weight	3.8 kg			4.5 kg	5 kg	3.8 kg			4.5 kg		5 kg		

Notes: (1) Valid for port 1 when selecting "High Resolution" mode

(2) Valid for Filter Bandwidth settings of 15 GHz and larger. For Filter Bandwidth settings below 15 GHz an additional loss of up to 2 dB may apply.

(3) Valid for Filter Bandwidth settings of 25 GHz and larger. For Filter Bandwidth settings below 25 GHz an additional loss of up to 2 dB may apply.

(4) Optical signals with spectral components below 600 nm must be avoided.

(5) Specifications for the WaveShaper 1000B/O, 4000B/O, 32000B and for 32002B are preliminary.

(6) The WaveShaper 32000B and 32002B have at least 8 premium ports per core which show reduced insertion loss. These will be named in the Certificate of Conformity which comes along with the shipment.

(7) Bandwidth is defined as Full Width at Half Maximum (FWHM)

Model	Order Code	Description	Wavelength Band	Housing Type	Fiber Type	# of Cores	Connection Type
WaveShaper 100B	WS-00100B-C-S-1-AA-00	Tunable Optical Filter	Super C	Benchtop	Single-Mode	1	FC/APC
	WS-00100B-C-R-1-AA-00	Tunable Optical Filter	Super C	Rackmount	Single-Mode	1	FC/APC
	WS-00100B-L-S-1-AA-02	Tunable Optical Filter	Extended L	Benchtop	Single-Mode	1	FC/APC
	WS-00100B-L-R-1-AA-02	Tunable Optical Filter	Extended L	Rackmount	Single-Mode	1	FC/APC
WaveShaper 500B	WS-00500B-C-S-1-AA-00	Programmable Optical Filter	Super C	Benchtop	Single-mode	1	FC/APC
	WS-00500B-C-R-1-AA-00	Programmable Optical Filter	Super C	Rackmount	Single-mode	1	FC/APC
	WS-00500B-L-S-1-AA-02	Programmable Optical Filter	Extended L	Benchtop	Single-Mode	1	FC/APC
	WS-00500B-L-R-1-AA-02	Programmable Optical Filter	Extended L	Rackmount	Single-Mode	1	FC/APC
	WS-00500B-L-S-1-AA-00	Programmable Optical Filter	Super L	Benchtop	Single-Mode	1	FC/APC
	WS-00500B-X-S-1-AA-00	Programmable Optical Filter	Super C + Super L	Benchtop	Single-Mode	1	FC/APC
	WS-00500B-X-R-1-AA-00	Programmable Optical Filter	Super C + Super L	Rackmount	Single-Mode	1	FC/APC
WaveShaper 1000B	WS-01000B-O-S-1-AA-00	Programmable Optical Filter	O-band	Benchtop	Single-mode	1	FC/APC
	WS-01000B-O-R-1-AA-00	Programmable Optical Filter	O-band	Rackmount	Single-mode	1	FC/APC
	WS-01000B-C-S-1-AA-00	Programmable Optical Filter	Super C	Benchtop	Single-mode	1	FC/APC
	WS-01000B-C-S-2-AA-00	Programmable Optical Filter	Super C	Benchtop	Single-mode	1	FC/UPC
	WS-01000B-C-R-1-AA-00	Programmable Optical Filter	Super C	Rackmount	Single-mode	1	FC/APC
	WS-01000B-L-S-1-AA-02	Programmable Optical Filter	Extended L	Benchtop	Single-Mode	1	FC/APC
	WS-01000B-L-R-1-AA-02	Programmable Optical Filter	Extended L	Rackmount	Single-Mode	1	FC/APC
	WS-01000B-L-S-1-AA-00	Programmable Optical Filter	Super L	Benchtop	Single-mode	1	FC/APC
	WS-01000B-L-S-2-AA-00	Programmable Optical Filter	Super L	Benchtop	Single-mode	1	FC/UPC
	WS-01000B-L-R-1-AA-00	Programmable Optical Filter	Super L	Rackmount	Single-mode	1	FC/APC
	WS-01000B-X-S-1-AA-00	Programmable Optical Filter	Super C + Ext L	Benchtop	Single-mode	1	FC/APC
	WS-01000B-X-S-2-AA-00	Programmable Optical Filter	Super C + Ext L	Benchtop	Single-mode	1	FC/UPC
	WS-01000B-X-R-1-AA-00	Programmable Optical Filter	Super C + Ext L	Rackmount	Single-mode	1	FC/APC
	WS-01000B-X-R-2-AA-00	Programmable Optical Filter	Super C + Ext L	Rackmount	Single-mode	1	FC/UPC
WaveShaper 4000B	WS-04000B-O-S-1-AA-00	Programmable Optical Processor	O-band	Benchtop	Single-mode	1	FC/APC
	WS-04000B-O-R-1-AA-00	Programmable Optical Processor	O-band	Rackmount	Single-mode	1	FC/APC
	WS-04000B-C-S-1-AA-00	Programmable Optical Processor	Super C	Benchtop	Single-mode	1	FC/APC
	WS-04000B-C-S-2-AA-00	Programmable Optical Processor	Super C	Benchtop	Single-mode	1	FC/UPC
	WS-04000B-C-R-1-AA-00	Programmable Optical Processor	Super C	Rackmount	Single-mode	1	FC/APC
	WS-04000B-L-S-1-AA-02	Programmable Optical Processor	Extended L	Benchtop	Single-Mode	1	FC/APC
	WS-04000B-L-R-1-AA-02	Programmable Optical Processor	Extended L	Rackmount	Single-Mode	1	FC/APC
	WS-04000B-L-S-1-AA-00	Programmable Optical Processor	Super L	Benchtop	Single-mode	1	FC/APC
	WS-04000B-L-S-2-AA-00	Programmable Optical Processor	Super L	Benchtop	Single-mode	1	FC/UPC
	WS-04000B-L-R-1-AA-00	Programmable Optical Processor	Super L	Rackmount	Single-mode	1	FC/APC
	WS-04000B-X-S-1-AA-00	Programmable Optical Processor	Super C + Ext L	Benchtop	Single-mode	1	FC/APC
	WS-04000B-X-S-2-AA-00	Programmable Optical Processor	Super C + Ext L	Benchtop	Single-mode	1	FC/UPC
	WS-04000B-X-R-1-AA-00	Programmable Optical Processor	Super C + Ext L	Rackmount	Single-mode	1	FC/APC
	WS-04000B-X-R-2-AA-00	Programmable Optical Processor	Super C + Ext L	Rackmount	Single-mode	1	FC/UPC
WaveShaper 3200xB	WS-32000B-C-S-3-AA-00	Reconfigurable Optical Processor	Super C	Benchtop	Single-mode	1	LC/APC
	WS-32000B-C-S-3-AA-00	Reconfigurable Optical Processor	Super C+ Super L	Benchtop	Single-mode	1	LC/APC
	WS-32002B-C-S-3-AA-00	Reconfigurable Optical Processor	Super C	Benchtop	Single-mode	2	LC/APC
	WS-32002B-C-R-3-AA-00	Reconfigurable Optical Processor	Super C	Rackmount	Single-mode	2	LC/APC
	WS-32002B-X-S-3-AA-00	Reconfigurable Optical Processor	Super C+ Super L	Benchtop	Single-mode	2	LC/APC
	WS-32002B-X-R-3-AA-00	Reconfigurable Optical Processor	Super C+ Super L	Rackmount	Single-mode	2	LC/APC

## Additional Resources

Visit <https://www.coherent.com/networking/optical-instrumentation> for the latest product information, news and software for the WaveShaper and WaveAnalyzer product families.

## Product Demonstration Videos

Watch product demos at: <https://www.youtube.com/@CoherentCorp>

## Order Code Key

