

ERBIUM DOPED FIBER LASER

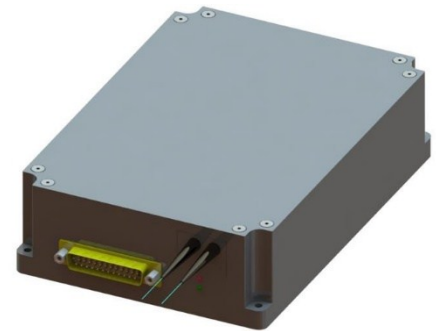


Model Number: **EDFL-Nano-1550-4-36-3.6W-COL**

Product Code: **1715**

Micro Processor Controlled

Nanosecond Fiber Laser Module



Specifications:

Parameters	Specifications
Center Wavelength	1550 nm typical
Pulse Width	4 ns
Energy Per Pulse	Up to 36 μ J
Pulse Repetition Rate	100 – 250 kHz
Output Power	3.6 W
Optical Output	9 mm beam diameter
Output Beam Divergence	0.4 mrad typical
Timing Jitter	\leq 0.50 ns, rising edge of the TTL trigger to the Laser Output Pulse
Control and Communication Interface	RS-232, RS-232 voltage level
Dimension	180 x 130 x 49 mm
Power Input	+24 VDC +/- 5%
Electrical Interface Connector	PN: 173-E25-113R001
Operational Case Temperature Range	-5 to +60 $^{\circ}$ C
Mode of Operation	ACC (constant pump current control)

Ordering Information:



800 Village Walk #316
 Guilford, CT 06437
 Ph: 203-401-8093

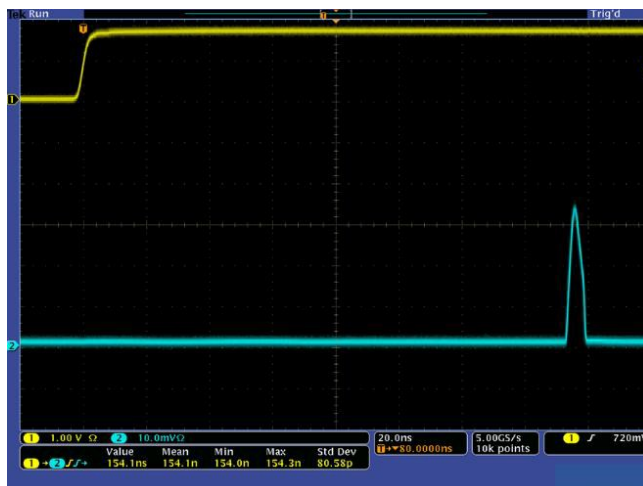
Email orders to: sales@xsoptix.com
 Fax orders to: 800-878-7282

Proprietary Information of Nuphoton Technologies
 Manufactured in the USA

info@nuphoton.com

+1-(951)-696-8366

+1-(951) 696-8394



Top trace: external trigger Bottom trace: laser output pulse

Electrical connector:

Part number: 173-E25-113R001

Pin No.	Description	Pin No.	Description
1	24V Vin	14	GROUND
2	24V Vin	15	GROUND
3	24V Vin	16	GROUND
4	MECHANICAL ENCLOSURE	17	GROUND
5	BURST INPUT	18	GROUND
6	GROUND	19	RS232-TX
7	GROUND	20	RS232-RX
8	GROUND	21	GROUND
9	LASER CURRENT ALARM	22	GROUND
10	COMMON ALARM	23	LASER ENABLE
11	LASER STATUS	24	LASER POWER
12	CUST SIGNAL	25	ANALOG GROUND
13	CASE TEMP OUT		

