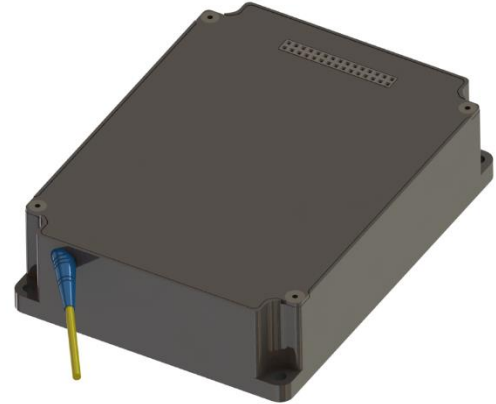


Model Number: EDFL-Nano-1550-2-20-1-COL

Product Code: 1705

Micro Processor Controlled

Nanosecond Fiber Laser Module Specification



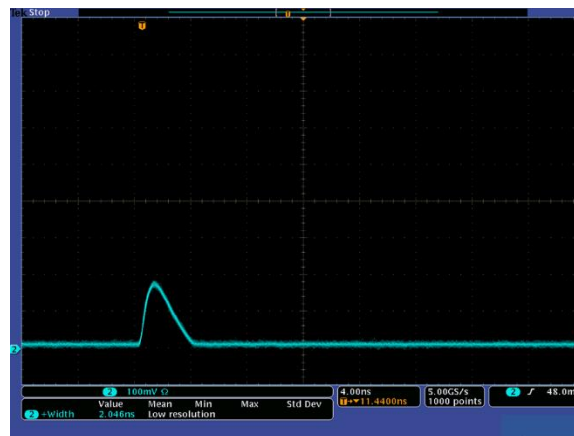
Ordering Information:



800 Village Walk #316  
 Guilford, CT 06437  
 Ph: 203-401-8093

Email orders to: [sales@xsoptix.com](mailto:sales@xsoptix.com)  
 Fax orders to: 800-878-7282

Parameters	Specifications
Center Wavelength	1550 nm typical
Pulse Width	2 ns
Energy Per Pulse	Up to 20 $\mu$ J
Pulse Repetition Rate	50 kHz -600 kHz
Output Power	1 W
Optical Output	9.0 mm beam diameter typical
Output Beam Divergence	0.4 mrad typical
Timing Jitter	$\leq$ 0.3 ns, rising edge of the TTL trigger to the Laser Output Pulse
Control and Communication Interface	RS-232, TTL voltage level
Dimension	100 x 75 x 25 mm
Power Input	+12 VDC +/- 5%
Electrical Interface Connector	PN: SAMTEC SMM-115-02-SD, Female 30-PIN
Operational Case Temperature Range	-5 to +60°C
Mode of Operation	ACC (constant pump current control)



Typical Laser Pulse Shape