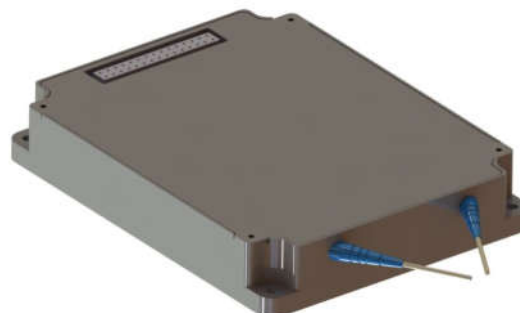


Model Number: **EDFA-CW-C0-PM-MR-30-20-FCA**

Product Code: **1317B**

Micro Processor Controlled EDFA



Specifications:

Parameters	Specifications
Wavelength Range	1540 – 1565nm, C-band single channel
Polarization Maintaining Property	Provided. Optical signal: slow axis light is amplified; fast axis light is blocked
Gain Flattening Filter	Not included
Output Power	+30 dBm, tested with 1550 nm, +10 dBm input
Gain	20 dB, tested with 1550 nm, +10 dBm input
Optical Input Fiber	900um loose tube, FC/APC, blue, 1 meter, PM fiber PN: SM15-PS-U25D
Optical Output Fiber	900um loose tube, FC/APC, red, 1 meter, PM fiber PN: SM15-PS-U25D
Input Power Monitoring Range	-5 dBm to +15 dBm
Output Power Monitoring Range	+13 to +31 dBm
Input Power Measurement Accuracy	≤ +/- 0.5 dB, 1550 nm
Output Power Measurement Accuracy	≤ +/- 0.5 dB, 1550 nm
Noise Figure	≤ 10.0 dB typical, tested at 20 dB gain, 1550 nm, +10 dBm input
Polarization Extinction Ratio	≥ 20 dB
Control and Communication Interface	RS-232, UART 5V / 0 V voltage level
Dimension	90 x 70 x 15mm
Power Input	+5 VDC +/- 5%
Electrical Interface Connector	PN: ESQT-115-02-F-D-391, Female 30-PIN
Operational Case Temperature Range	0 to +65 °C
Mode of Operation	AOPC (constant output power control), ACC (constant pump current control)

Electrical connector:

Part number: ZLTMM-115-73-G-D-391

Pin No.	Description	Pin No.	Description
1	+5 V Vin	2	+5 V Vin
3	-	4	-
5	GROUND	6	GROUND
7	SERIAL DATA RECEIVE	8	SERIAL DATA TRANSMIT
9	GROUND	10	GROUND
11	-	12	RESET SIGNAL
13	EDFA DISABLE	14	OUTPUT MUTE
15	CASE TEMPERATURE ALARM	16	COMMON ALARM
17	-	18	LASER CURRENT ALARM
19	INPUT POWER ALARM	20	OUTPUT POWER ALARM
21	INPUT GND	22	OUTPUT MPD GROUND
23	INPUT POWER MONITOR	24	OUTPUT POWER MONITOR
25	GROUND	26	GROUND
27	-	28	-
29	+5 V Vin	30	+5 V Vin

Ordering Information:



800 Village Walk #316
 Guilford, CT 06437
 Ph: 203-401-8093

Email orders to: sales@xsoptix.com
 Fax orders to: 800-878-7282

