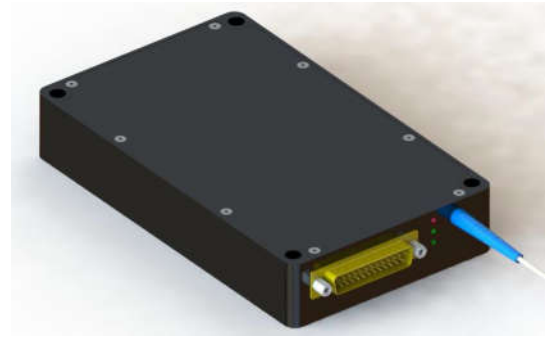


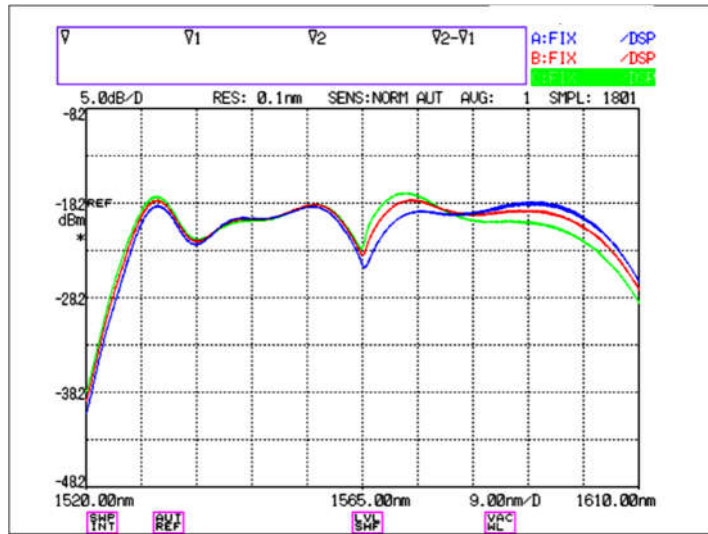
ASE LIGHT SOURCE

Model Number: **ASE-CLO-RS-16-FCA**
 Product Code: **1327**
Micro Processor Controlled
Amplified Spontaneous Emission Source



Specifications:

Parameters	Specifications
Wavelength Range	1530 – 1605nm
Spectral Flattening Filter	Not included
Output Power	+16 dBm, +13 dBm in C-band and +13 dBm in L-band
Optical Output Fiber	900um loose tube, FC/APC, red, 1 meter, SMF-28
Output Power Monitoring Range	+10 to +17 dBm
Output Power Measurement Accuracy	≤ +/- 0.3 dB, 1550 nm
Polarization Dependence of Output Power	≤ 0.3 dB
Control and Communication Interface	RS-232, RS232 Voltage Level
Dimension	170 x 100 x 30 mm
Power Input	+5 VDC +/- 5%
Electrical Interface Connector	PN: MD25M2000/AA, 25-PIN
Operational Case Temperature Range	0 to +60 °C
Mode of Operation	ACC (constant pump current control)



Typical Optical Spectra of ASE Output, 0°C (blue trace), +25°C (red trace), and +60°C (green trace) Case Temperature

Electrical connector:

Part number: DB25

Pin No.	Description	Pin No.	Description
1	+5Vin	14	GROUND
2	GROUND	15	CUSTOMER TRIGGER
3	FAN OUT	16	POWER ON
4	RS232 TX	17	LASER ON
5	RS232 RX	18	ALARM SIGNAL
6	PUMP ENABLE/DISABLE	19	+5VD
7	INPUT POWER ALARM	20	GROUND
8	OUTPUT POWER ALARM	21	+5Vin
9	PUMP TEMP ALARM	22	GROUND
10	PUMP BIAS ALARM	23	DOWNLOAD
11	CASE TEMP ALARM	24	RESET
12	LED ON	25	-
13	PUMP ENABLE ALARM		

Ordering Information:



800 Village Walk #316
 Guilford, CT 06437
 Ph: 203-401-8093

Email orders to: sales@xsoptix.com
 Fax orders to: 800-878-7282

