



Upgraded on 27 June 2012 by COF / Checked by GVM

info@monocrom.com

C. Vilanoveta, 6
08800 Vilanova i la Geltrú
Barcelona | Spain

Tel.: +34 938 149 450
Fax.: +34 938 143 767
www.monocrom.com

Product Division

LDM Laser Diode Modules

Product

WP- Series

Description

Water Proof Collimated Laser Diode Module

Main Features

- Water proof IP67
- Hard environment protected
- High quality lens, and excellent beam performance
- Wide range of wavelengths available

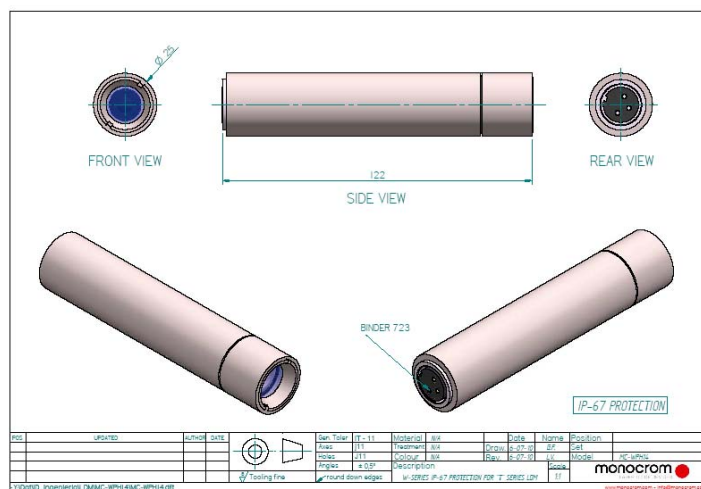
Some Applications

- Automatics & Robotics
- Guidance
- Bio-medics
- Lighting
- Imaging

Picture



Outline



WATER PROOF COLLIMATED LASER DIODE MODULE

WP-Series

ORDERING LDM STANDARD PART NUMBER CODE

MC-WW PP H-A LLL

MC: Standard basic LDM

WW: Wavelength

PP: Optical power

H: Housing

A: Clear aperture: 2, 3, 4, 5, 6

LLL: Optics

GENERAL SPECIFICATIONS FOR STANDARD DIODE LASER MODULES

Model	6305	6310	6335	6507	6535	6707	7805	7850	8505	8390	9005	1005
Wavelength (20°C) [nm]	635±5	639±5	635±5	655±5	655±5	675±5	780±5	780±5	850±10	830±10	905±5	1064±10
Po.max [mW]	2,5	8	25	5	25	5	2,5	30	2,5	90	2,5	5
Op. current [mA] (at max.Po@25°C)	50	85	110	60	100	50	60	100	60	120	60	70
Operating temperature [°C]	-10 to 50	-10 to 60	-10 to 50	-10 to 70	-10 to 55	-10 to 60			-10 to 50		-10 to 40	
Storage temperature [°C]	-40 to 85											
Beam specifications	See lens table below											
Window transmission	> 90% with ARC for each wavelength range											
Thermal drift	0.27 nm / °C											
Polarisation ratio	>50:1											
Output power stability	0.3% / °C											
Bore sight, typical	< 10 mrd											
Reverse voltage protection circuit	Built in											
Op. voltage for cw operation	4,5 Vdc											
Expected lifetime	>10.000 Hours											
Connector	BINDER 723 series											
Laser product class	According with the radiant flux and EN-60825 classification, duly identified by labels.											
Housing	W type : Hard anodizing Al Ø25(+0/-0,1) x length 125 (±2.5)mm											
Protection grade	IP67											

Conditions @ 25°C while not specified. Specifications could change depending on LD used.
Lower power or pre-focusing at factory on request

OPTICS OPTIONS (to add to the LDM type selected –LLL)

Lens Type	A10					A15					H18					L05	L10	L20	L50	L100
	Glass aspheric					Glass aspheric					Acrylic aspheric					Glass cylindrical line tracing				
Clear aperture (A) [mm]	2	3	4	5	6	2	3	4	5	6	2	3	4	5	6	5	6	4	6	4
Relative efficiency [%] (collimated), typical	20	30	70	80	100	10	15	20	40	60	10	20	30	40	60	64	70	60	70	60
Typ. Divergence [mrd]	0,5					0,3					0,8					0,3	0,4	0,6	0,7	0,8
Fan angle [°]	-					-					-					5	10	20	50	100
Focal length [mm]	10					15					18					50	40	10	8	5
Focusable range [mm]	60±40 to infinite					250±50 to infinite					150±40 to infinite					>20* to infinite				
Min. focusable diameter @ focus [µm]	70					150					150					120				
Main feature	High transmission					Low divergence					Low price					No line bowing				

Specifications could change depending on LD used.
*Depending on collimator used

POWER REGULATION (OPTIONAL) / MODULATION MODES

	ANALOGUE	DIGITAL
Input signal, Vmod, typical	0.5 to 2V (For Power from 0 to PoMax)	TTL (for Power = [0 , Po Max])
Modulation range		CW to 10MHz
Rise & fall time [ns], typical		<50ns
Input impedance		560 Ohm
Resistor to add in parallel for HF		50 Ohm (@ >1MHz)
Po with 0Vdc input signal		0W
Po without modulation input (coaxial cable unplugged)		>50% of PoMax

Ordering Information:



800 Village Walk #316
Guilford, CT 06437
Ph: 203-401-8093

Email orders to: sales@xsoptix.com
Fax orders to: 800-878-7282