

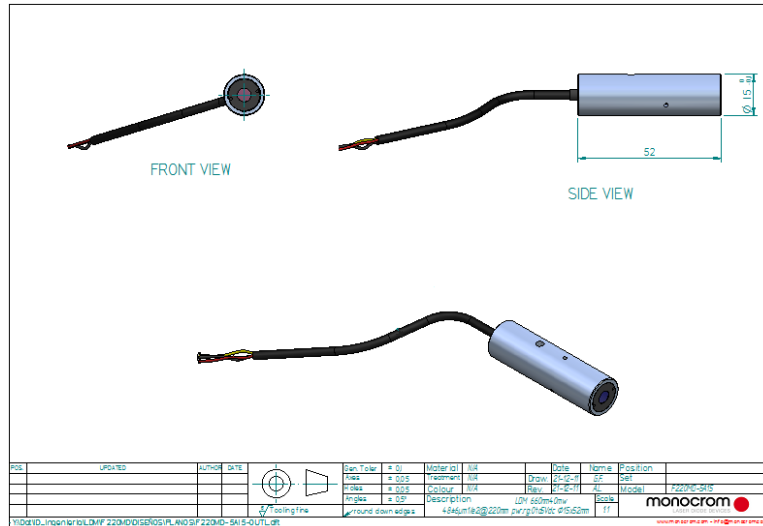
Updated by COF on 7 March 2013 / Checked by GVM

info@monocrom.com

C. Vilanoveta, 6  
08800 Vilanova i la Geltrú  
Barcelona | Spain

Tel.: +34 938 149 450  
Fax.: +34 938 143 767  
www.monocrom.com

Product Division	<b>LDM</b> <b>Laser Diode Modules</b>										
Product	<b>O- Series NIR</b>										
Description	<b>Collimated or pre-focused Near Infrared wavelength Laser Diode Module</b>										
Main Features	<ul style="list-style-type: none"> <li>• Small size</li> <li>• Low bore-sight</li> <li>• Housing electrically isolated</li> <li>• Low operation current</li> <li>• High quality lens, and excellent optical performance</li> <li>• Wide range of wavelengths available</li> </ul>										
Some Applications	<ul style="list-style-type: none"> <li>• Automatics &amp; Robotics</li> <li>• Guidance</li> <li>• Bio-medics</li> <li>• Aesthetics</li> <li>• Lighting</li> <li>• Imaging</li> </ul>										
Picture											
Outline	<p><b>Technical Drawing Details:</b></p> <ul style="list-style-type: none"> <li><b>SIDE VIEW:</b> Shows a cylindrical component with a length of 50 mm and a diameter of 10.5 ± 0.05 mm.</li> <li><b>FRONT VIEW:</b> Shows the circular lens face with a central bore-sight.</li> <li><b>3D PERSPECTIVE:</b> Shows the module with a cable attached to one end.</li> </ul> <table border="1"> <thead> <tr> <th>REV.</th> <th>DATE</th> <th>DESCRIPTION</th> <th>BY</th> <th>CHK</th> </tr> </thead> <tbody> <tr> <td> </td> <td> </td> <td> </td> <td> </td> <td> </td> </tr> </tbody> </table> <p>     1) Optical properties: LDM-65070-6A1S (0.5° beam divergence) - ANODIZED ALUMINUM HOUSING - 6A1S (0.5°)   </p>	REV.	DATE	DESCRIPTION	BY	CHK					
REV.	DATE	DESCRIPTION	BY	CHK							



**COLLIMATED OR PRE-FOCUSED LASER DIODE MODULE  
O-Series**

ORDERING LDM STANDARD PART NUMBER CODE				MC-WW PP H-A LLL		
<b>MC:</b> Standard basic LDM	<b>ww:</b> Wavelength	<b>pp:</b> Optical power	<b>H:</b> Housing	<b>A:</b> Clear aperture: 2, 3, 4, 5, 6, 7	<b>LLL:</b> Optics	

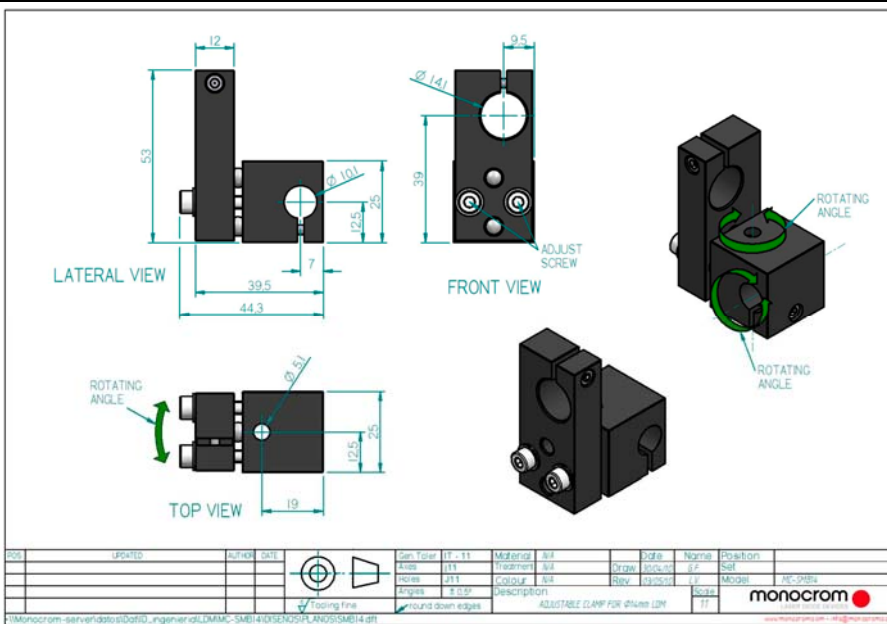
GENERAL SPECIFICATIONS FOR STANDARD DIODE LASER MODULES						
Model "MC wwpp O"	7805	7850	8505	9010	9850	1005
Wavelength (20°C) [nm]	780±5	780±5	850±10	905±5	980±5	1064±10
Output power [mW], typ. with 7A10	4 to 4,7	40 to 47	4 to 4,7	8 to 9,5	40 to 47	4 to 4,7
Op. current, typical (mA for max.Po@25°C)	60	100	60	70	80	70
Operating temperature [°C]	10 to 60		10 to 50		10 to 40	
Storage temperature [°C]	-40 to 85					
Clear aperture	See optics options table below					
Divergence	See optics options table below					
Polarisation ratio	>50:1					
Output power stability	<0.5%RMS					
Bore sight, typical	< 1 mrd					
Reverse voltage protection circuit	Built in					
Op. voltage for cw operation	4,5 (-0,2 / +1,0) Vdc Available on 24V DC with external Regulator along the cable					
Expected lifetime	>10.000 Hours					
Connection	200mm Flying leads or 200mm cable+standard connector					
Laser product class	According to the radiant flux and EN-60825 classification. Duly identified by labels.					
Housing	Hard anodizing Al Ø11(+0/-0.05)x50mm Hard anodizing Al Ø15(+0/-0.05)x52mm					
Weight	≤14 gr					

Conditions @ 25°C while not specified. Specifications could change depending on LD used.  
Lower power or pre-focusing at factory on request  
Heat sink is recommended for I>80mA.

OPTICS OPTIONS																
Lens Type	A10					A15					L05	L10	L20	L50	L100	
	Glass aspheric					Glass aspheric					Glass cylindrical for line tracing					
Clear aperture [mm]	2	3	4	5	6	7	2	3	4	5	6	6	6	4	6	4
Relative efficiency [%] to Po.max.	20	30	70	80	90	100	10	15	20	40	60	70	70	60	70	60
Typ. Divergence [mrd] (collimated beam)	0,5					0,3					0,3	0,4	0,6	0,7	0,8	
Fan angle	-					-					5	10	20	50	100	
Main feature	High transmission					Low divergence					Minimum line bowing					

**ACCESSORIES: ( optionally )**

**MC-SMB14 with A14D11 adaptor ring to Ø11mm**



**PSLDM5**

F.A. Converter  
220V AC to 4,5VDC / 1,2 A  
Established Europlug



*Ordering Information:*



800 Village Walk #316  
Guilford, CT 06437  
Ph: 203-401-8093

Email orders to: [sales@xsoptix.com](mailto:sales@xsoptix.com)  
Fax orders to: 800-878-7282