



Updated on 20/01/2012 by COF

info@monocrom.com

C. Vilanoveta, 6
08800 Vilanova i la Geltrú
Barcelona | Spain

Telf.: +34 938 149 450
Fax.: +34 938 143 767
www.monocrom.com

Product Division:



SSL

Diode Pumped Solid State Laser & Laser Units

Product

LQ-527-12

Description:

Green Diode Pumped Solid State Laser

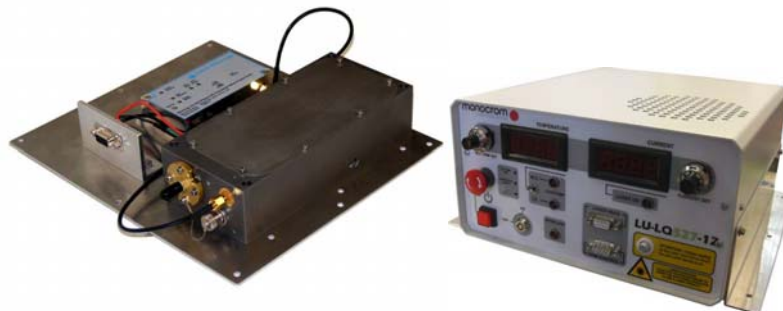
Main Features

This device produces short laser pulses of 1.7 microseconds with up to 1mJ. Using microsecond pulses, only the target cells are destroyed not the tissue and, therefore, new cells are grown attaching the retina and returning the vision to that spot.
When longer pulses are used, it is possible to expose the central area of the detached retina with the involuntary eye movement.
Using microsecond pulses, the probability of involuntary eye movement-induced damage is reduced 10'000 times.

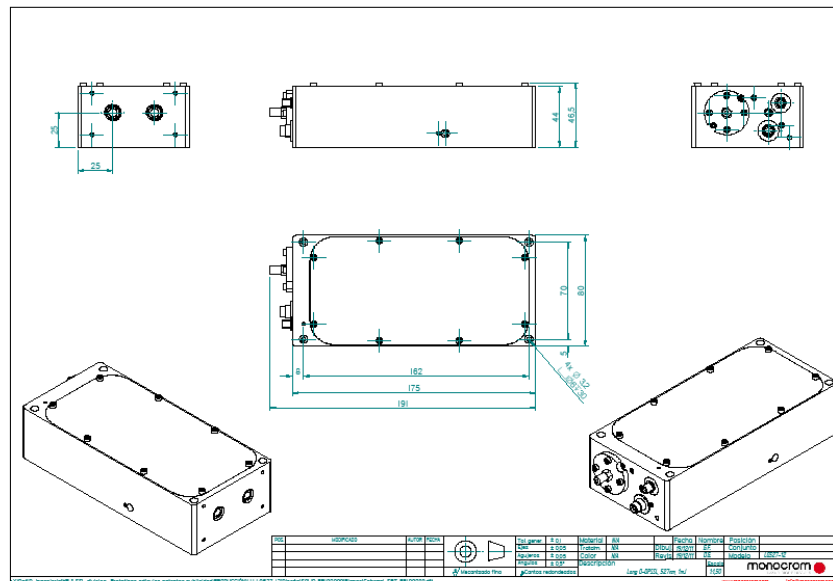
Some Applications

- Regeneration of a detached retina

Picture(s)



Outline



LQ-527-12 GENERAL TECH. SPECIFICATIONS		
Wavelength	527 nm	
Pulse energy	≥ 800 μJ	
Pulse-to-pulse energy stability	≤ 5 % Within burst (After the laser is warmed up)	
Effective pulse time	100% of energy within 1.1 times FWHM	
Pulse width	1,7 μs ± 10% FWHM	
Repetition rate	100 Hz ± 1%	
Output beam centering	≤ 2 mm from the center of laser exit window	
Operation temperature, typ. ¹	15-35 °C	
Beam Quality	M ² ≤ 1.6	
Far field beam divergence	4 – 6 mrad	
Pumping diode	Wavelength	808 nm
	Current	<50 A
	Voltage	<2V
	Pulse duration	800 μs
Pulse Shape	Amplitude variation, typical (Pend/Ppeak)	50 %
	Ripple within one pulse	≤ 10% of max. amplitude
	Fluctuation of the ratio	≤ 10%
	Stabilization time	≤ 10 sec. (TBD)
Laser Beam Point stability	≤ 1 mrad (measured without attaching fiber)	
Dimension	191x80x46,5mm	
Laser Safety Classification	IEC class 4; FDA class IV	

Ordering Information:



800 Village Walk #316
Guilford, CT 06437
Ph: 203-401-8093

Email orders to: sales@xsoptix.com
Fax orders to: 800-878-7282