

Product Division



LDM

Laser Diode Modules

Product

K- Series

Description

Low Divergence Collimated industrial diode laser pointer

Main Features

- Low bore-sight
- Housing Stainless Steel electrically isolated
- Low operation current
- Wide range of wavelengths available
- Portable and rugged design

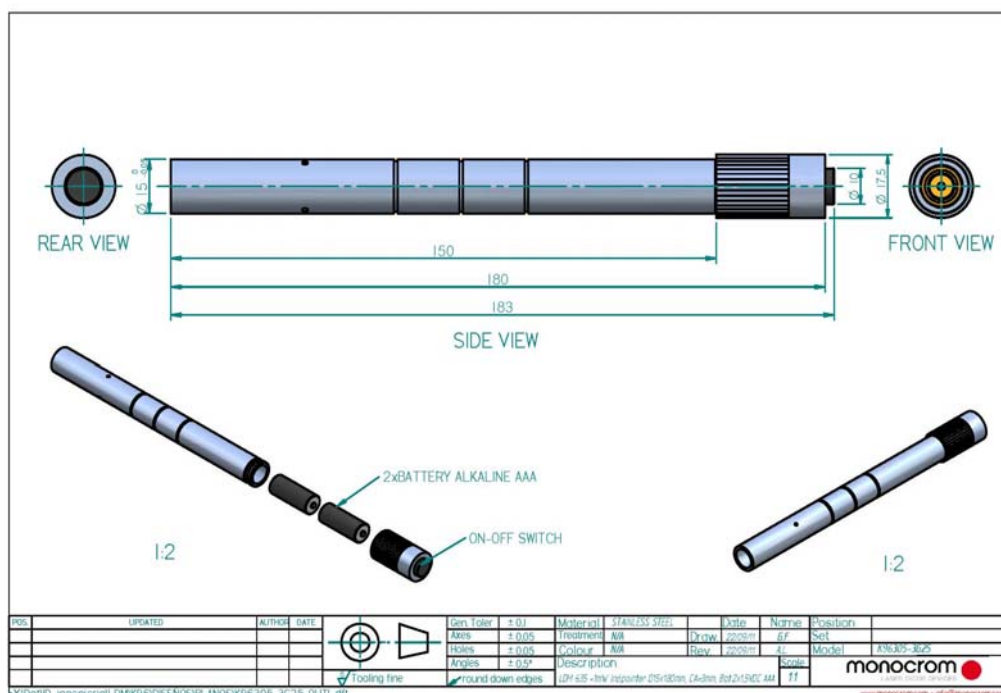
Some Applications

- Automation fields
- Guidance
- Lighting
- Imaging

Picture



Outline



Ordering Information:



800 Village Walk #316
Guilford, CT 06437
Ph: 203-401-8093
Email orders to: sales@xsoptix.com
Fax orders to: 800-878-7282



INDUSTRIAL DIODE LASER POINTER

K-Series

ORDERING LDM STANDARD PART NUMBER CODE

MC-WW PP H-A LLL

MC: Standard basic LDM

WW: Wavelength

PP: LD Optical power

H: Housing: M

A: Clear aperture: 2, 3, 4, 5, 6

LLL: Optics

GENERAL SPECIFICATIONS FOR STANDARD DIODE LASER MODULES

Model "MC wwpp O"	K6303	K6305	K6507	K6707
Wavelength (20°C) [nm]	635±5	635±5	655±5	675±5
Max.Output power Po[mW] with A10	<1	2		3
Typ Op. current (mA for max.Po@25°C)	40	60	50	45
Operating temperature [°C]	-10 to 50		-10 to 60	-10 to 55
Storage temperature [°C]			-40 to 85	
Clear aperture	From 2 to 6 mm (to be specified at order)			
Divergence (min. with A15 lens)			0,18 mrd	
Polarisation ratio			>50:1	
Output power stability			<0.5 %RMS	
Bore sight			< 0,5 mrd	
Reverse voltage protection circuit			Built in	
FEEDING VOLTAGE	Two batteries 1.5Vdc type LR-O3 AAA DO NOT USE RECHARGEABLE BATTERIES			
Expected lifetime			>10.000 Hours	
On/Off			By switch integrated	
Laser product class			3R According with the EN-60825 classification	
Housing			Ø15/18(+0/-0.05)X 180mm / Stainless Steel	
Weight			≤ 130 gr	

Conditions @ 25°C while not specified. Specifications could change depending on LD used.

OPTICS OPTIONS (to add to the LDM type selected –LLL)

Lens	A15					L05	L10	L20	L50	L100
Type	Glass aspheric					Glass cylindrical for line tracing				
Clear aperture (A) [mm]	2	3	4	5	6	5	6	4	6	4
Relative efficiency [%] to Po.max.	10	15	20	40	60	64	70	60	70	60
Typ. Divergence [mrd]			0,3			0,3	0,4	0,6	0,7	0,8
Fan angle [°]			-			5	10	20	50	100
Focal length [mm]			15			50	40	10	8	5
Main feature	Low divergence					Minimum line bowing				