

**NEW!**  
1kHz  
Line width

Ordering Information:



800 Village Walk #316  
Guilford, CT 06437  
Ph: 203-401-8093

Email orders to: [sales@xsoptix.com](mailto:sales@xsoptix.com)  
Fax orders to: 800-878-7282

## CoBrite<sub>DX4</sub> - Laser

### Features

- ✓ Ultra compact ; 1 to 4 lasers
- ✓ Polarization Maintaining Fiber
- ✓ Several Laser variants available
  - ✓ Fully tunable; narrow line width
  - ✓ 50GHz grid tunable; narrow line width
  - ✓ 50GHz grid tunable; standard linewidth
- ✓ Line width down to < 100kHz
- ✓ Remote control
  - ✓ USB & Ethernet connectivity
  - ✓ SCPI Style commands
- ✓ Easy-to-use pictographic GUI
- ✓ 19" Rack mount adapter available

### Applications

- ✓ DWDM transport testing
- ✓ ready for data rates 100G+
- ✓ coherent Transmission
  - ✓ Local Oscillator
  - ✓ Transmitter Laser
- ✓ versatile Light source



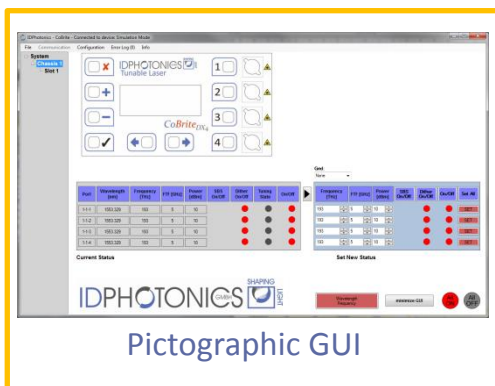
*CoBrite<sub>DX4</sub>* is a versatile tunable Laser light instrument that allows standalone operation by a local display which eliminates the need for complex software installations. It makes this solution ultra portable.

The chassis can be equipped with **1, 2 or 4** tunable lasers to meet your specific needs. SCPI command control empowers users to setup and perform complex automated tasks within minutes being 100% compatible to our *CoBrite<sub>MX</sub>* chassis series.

Remote operation via USB or Ethernet is easily accomplished by a pictographic GUI that allows control over all relevant parameters.



Optical Parameter	Ultra narrow line (N01)	Continuous tuning Laser (H01)	ITU Grid tuning Laser (C01)	Standard ITU tunable Laser (W01)	Unit
Frequency range; C – Band L – Band C&L – Band	191.5 – 196.25	191.3 – 196.25 186.35 – 190.95 <b>186.25 - 196.25</b>	191.7 – 196.1 186.5 – 190.9 –	191.7 – 196.1 186.5 – 191.1 –	THz
Channel Spacing	Continuous	Continuous	50	50	GHz
Frequency fine tune resolution	1	1	1	–	MHz
Frequency fine tune range	–	+/- 12GHz	+/- 15GHz	–	GHz
Optical Power range C Band L Band C&L Band	0 to +8 (+10 typ.) – –	6 – 16 6 – 16 3 – 12	15.5 14 –	8 – 14 5 – 11 –	dBm
Spectral Line width; 3dB instantaneous, 3.5us (Lorentzian contribution)	< 1	< 100 25kHz typical	Typical : 300 Max: 500	Typical : 800 Max: 5000	kHz
Frequency accuracy over Lifetime Over 24 hours	+/-2.5 +/-0.05 (1hr)		+/- 1.5 +/- 0.3GHz	+/- 1.8	GHz
SMSR; Side mode suppression ratio	>45 (50typ.)		>40 (50typ.)	>40 (45typ.)	dB
RIN (10MHz to 3GHz)		< -145 (up to 40GHz)		<-145	dB/Hz
Output Connector		FC/APC, FC/PC or SC/PC		FC/PC or SC/PC	
Output accuracy over Lifetime Over 1 hour Over 24 hours			-/+1 (1.3 for C&L Band) +/- 0.01 (typ.) +/- 0.03 (typ.)		dB
Output power setting resolution	0.1		0.01		dB
Optical Fiber	>17	Polarization- maintaining PANDA type Fiber, PER > 20dB, 25typ.			



### Device Parameter

Operating Temperature	0 to 40°C	non-condensing
Storage Temperature	-20°C to 60°C	non-condensing
Size of device (H x W x D)	85 x 171 x 350mm 3.3" x 6.7" x 13.8"	
Power Supply	90-240 VAC, <0.5A, 50/60Hz	

### Ordering Information

CBDX4	-X	-X	-XXX	-XX
Article	No of Lasers	Band	Variant	Connector
CoBriteDX4	1 2** 4*;**	C = C - Band L = L - Band CL = C&L Band	H01 C01 W01 N01	FA = FC/APC FP = FC/PC SP = SC/PC
CBDX4-19-x	19" Adaptor plate for rack mount, 3 HE 1: 1 Laserchassis; 2: 2 Laser chassis			

\* no C&L Band  
\*\* no N01



Invisible Laser Radiation  
Class 1M Laser Product  
EN 60825-1: IEC 60825-1

### Contact information

ID Photonics GmbH  
Anton-Bruckner-Str. 6  
85579 Neubiberg  
GERMANY  
Tel.: + 49 (0) 89 – 201 899 16

[info@id-photonics.com](mailto:info@id-photonics.com)  
[www.id-photonics.com](http://www.id-photonics.com)