

**Ordering Information:**



800 Village Walk #316  
Guilford, CT 06437  
Ph: 203-401-8093

Email orders to: [sales@xsoptix.com](mailto:sales@xsoptix.com)  
Fax orders to: 800-878-7282

## CoBrite<sub>DX1</sub> - Laser

### Features

- ✓ Ultra compact
- ✓ Polarization Maintaining Fiber

### Continuously tunable Variant

- ✓ Line width < 100kHz
- ✓ Output power tunable from 6.0dBm up to 16.0dBm
- ✓ tunable to any Frequency; 1MHz step size Fine Tuning

### ITU Grid tunable Variant

- ✓ Typ. Line width 300kHz
- ✓ tunable to 50GHz ITU Grid, +/-15GHz; 100MHz step size Fine Tuning
- ✓ Cost efficient coherent transmission

### General purpose tunable Variant

- ✓ General purpose tunable laser at cost of a DFB source
- ✓ tunable to 50GHz ITU Grid
- ✓ Ultra cost efficient

### Applications

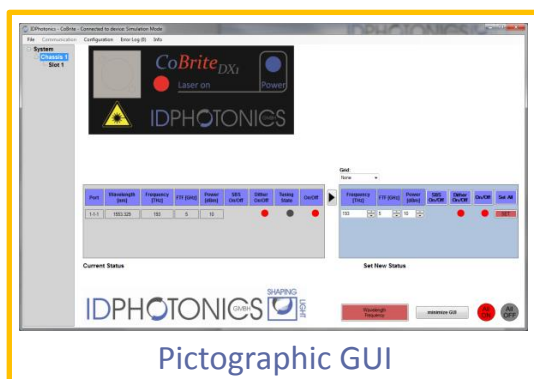
- ✓ DWDM transport testing
- ✓ ready for data rates 100G+
- ✓ coherent Transmission
  - ✓ Local Oscillator
  - ✓ Transmitter Laser
- ✓ versatile Light source



*CoBrite<sub>DX1</sub>* is a versatile tunable Laser light source that is easy to set up using any PC's standard USB port by an easy-to-use GUI. Multiple devices can be operated on a single PC allowing easy control even for high count multi-channel applications. Remote operation control via SCPI style commands empowers users to setup and perform complex automated tasks within minutes being 100% compatible to our *CoBrite<sub>MX</sub>* chassis series.

Once set up, *CoBrite<sub>DX1</sub>* will operate autonomously even without PC on last setting by it's built-in set & forget feature. A save last state feature allows to recover at last setting including on/off state after a power cycle.

Optical Parameter	NEW extended Range Continuous tuning Laser (H01)	ITU Grid tuning Laser (C01)	Standard ITU tunable Laser (W01)	Unit
Frequency tuning range; C – Band L – Band	191.3 – 196.25 186.35 – 190.95	191.7 – 196.1 186.5 – 190.9	191.7 – 196.1 186.5 – 191.1	THz
Channel Spacing	Continuous	50	50	GHz
Frequency fine tune resolution	1	1	–	MHz
Frequency fine tune range	+/- 12GHz	+/- 15GHz	–	GHz
Optical output Power range; C Band L Band C&L Band	6 – 16 6 – 16 3 – 12	15.5 14 –	8 – 14 5 – 11 –	dBm
Spectral Line width; 3dB instantaneous, 3.5us	<100 25kHz typical	Typical : 300 Max: 500	Typical : 800 Max: 5000	kHz
Frequency accuracy over Lifetime Over 24 hours		+/- 1.5 +/- 0.3GHz	+/- 1.8	GHz
SMSR; Side mode suppression ratio		>40 (50typ.)	>40 (45typ.)	dB
RIN (10MHz to 3GHz)		< -145 (up to 40GHz)	< -145	dB/Hz
Output Connector		FC/APC, FC/PC or SC/PC	FC/PC or SC/PC	
Output power accuracy over Lifetime Over 1 hour Over 24 hours		-/+1 +/- 0.01 (typ.) +/- 0.03 (typ.)		dB
Output power setting resolution		0.01		dB
Optical Fiber		Polarization- maintaining PANDA type Fiber, PER > 20dB, 25typ.		



### Mechanical Parameter

Operating Temperature	0 to 40°C	non-condensing
Storage Temperature	-20°C to 60°C	non-condensing
Size of device (H x W x D)	32 x 82 x 150mm 1.3" x 3" x 6"	
Power Supply	100-240 VAC, <10W, 47-63Hz	

### Ordering Information

CBDX	-X	-X	-XXX	-XX
Article	No of Lasers	Band	Laser Variant	Connector
CoBriteDX	1	C = C - Band L = L – Band	H01 C01 W01	FA = FC/APC FP = FC/PC SP = SC/PC

### Contact information

ID Photonics GmbH  
Anton-Bruckner-Str. 6  
85579 Neubiberg  
GERMANY  
Tel.: + 49 (0) 89 – 201 899 16  
[info@id-photonics.com](mailto:info@id-photonics.com)  
[www.id-photonics.com](http://www.id-photonics.com)